
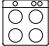


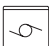

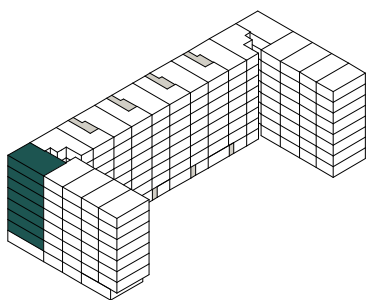
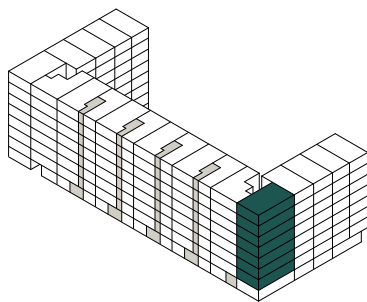
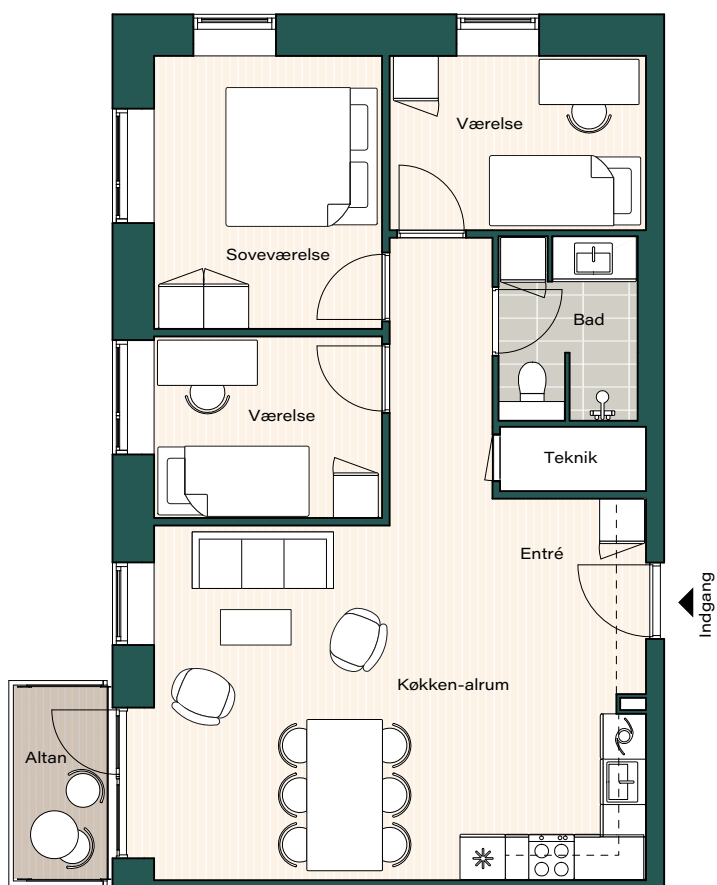


# Type 7A



Bolignr.: 115, 121, 127, 133, 139, 145, 151  
Værelser: 4  
Boligareal: 94 m<sup>2</sup>  
Altan: Ja

-  Køle - / Fryseskab
-  Kogeplade
-  Fast skab
-  Overskab
-  Opvaskemaskine
-  Inddækningskasse



1:100 1 2 3 4 5m

Tegningen er vejledende og ikke endelig målfast  
Version: juli 2023.

Bredde på svalegange kan variere mellem lejligheder


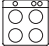


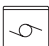

Vinduesplacering kan være forskellig for de enkelte lejligheder

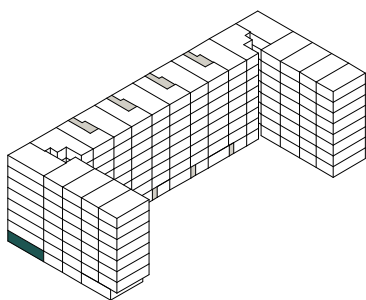
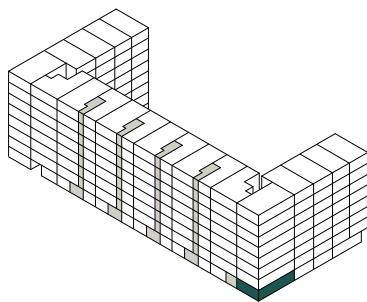
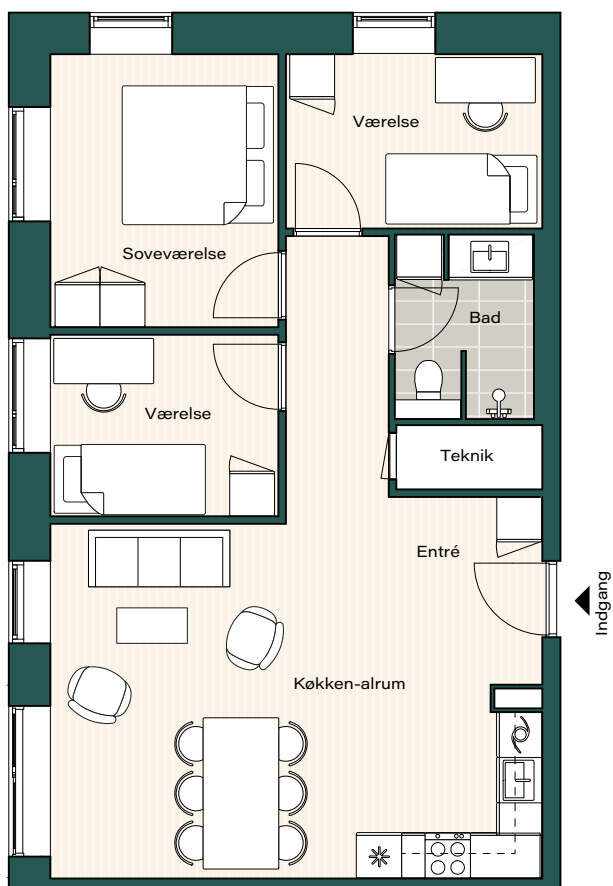
Boligareal beregnes som bruttoetageareal i henhold til bekendtgørelse nr. 311 af 27. juni 1983

# Type 7AS



Bolignr.: 114  
Værelser: 4  
Boligareal: 95 m<sup>2</sup>

-  Køle - / Fryseskab
-  Kogeplade
-  Fast skab
-  Overskab
-  Opvaskemaskine
-  Inddækningskasse



1:100 1 2 3 4 5m

Tegningen er vejledende og ikke endelig målfast  
Version: juli 2023.

Bredde på svalegange kan variere mellem lejligheder

Vinduesplacering kan være forskellig for de enkelte lejligheder

Boligareal beregnes som bruttoetageareal i henhold til bekendtgørelse nr. 311 af 27. juni 1983


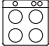


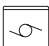

# Type 7B

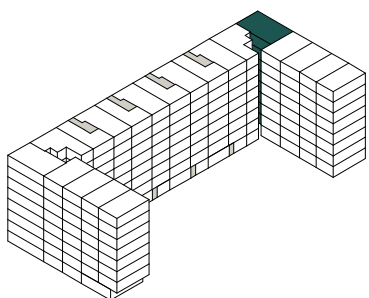
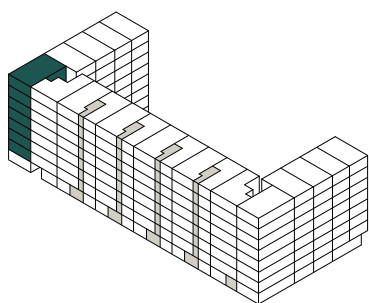
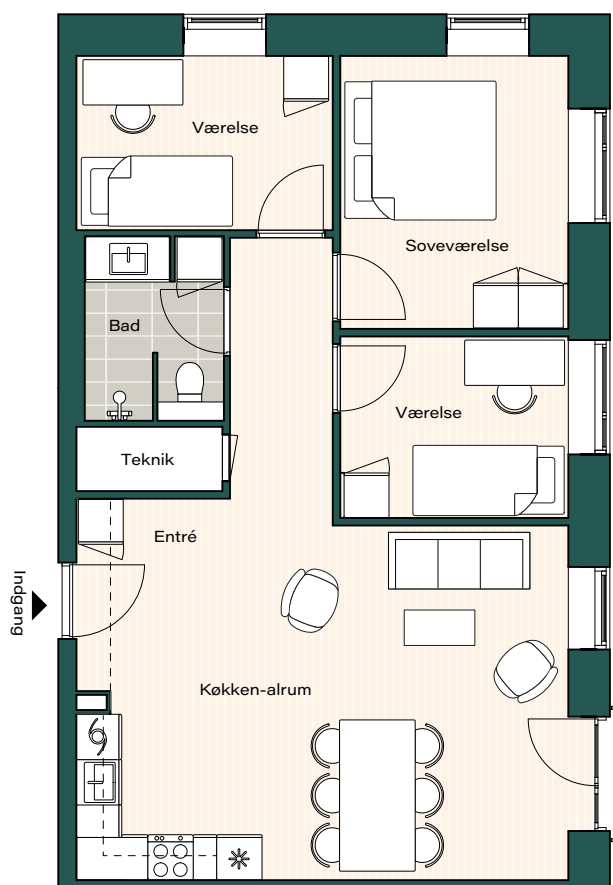


Bolignr.: 8, 14, 20, 26, 32, 38, 44

Værelser: 4

Boligareal: 94 m<sup>2</sup>

-  Køle - / Fryseskab
-  Kogeplade
-  Fast skab
-  Overskab
-  Opvaskemaskine
-  Inddækningskasse



1:100 1 2 3 4 5m

Bredde på svalegange kan variere mellem lejligheder

Vinduesplacering kan være forskellig for de enkelte lejligheder


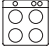


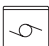

Tegningen er vejledende og ikke endelig målfast  
Version: juli 2023.

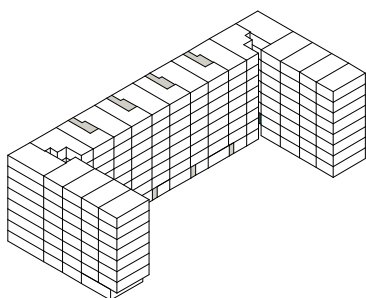
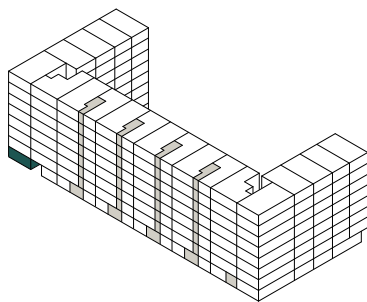
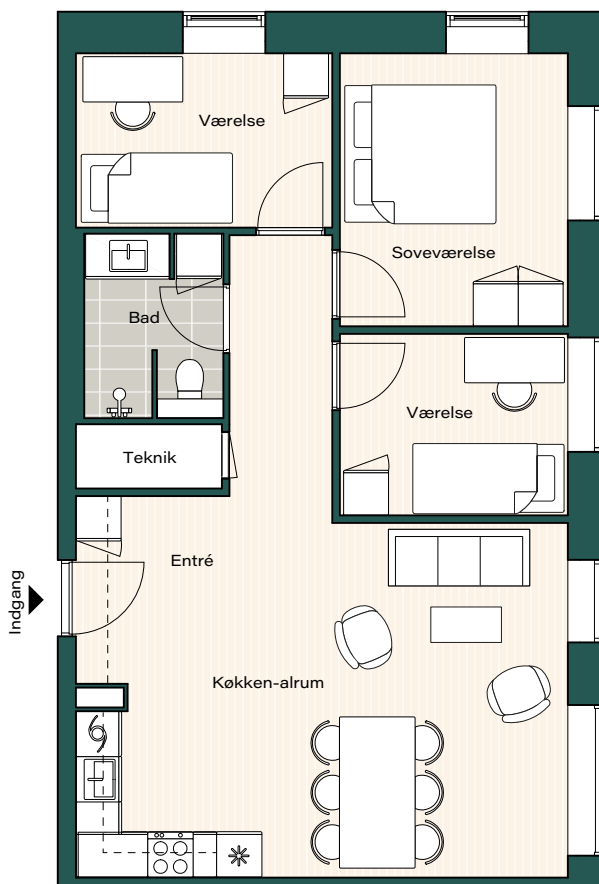
Boligareal beregnes som bruttoetageareal i henhold til bekendtgørelse nr. 311 af 27. juni 1983

# Type 7BS



Bolignr.: 5  
Værelser: 4  
Boligareal: 94 m<sup>2</sup>

-  Køle - / Fryseskab
-  Kogeplade
-  Fast skab
-  Overskab
-  Opvaskemaskine
-  Inddækningskasse



1:100 1 2 3 4 5m

Tegningen er vejledende og ikke endelig målfast  
Version: juli 2023.

Bredde på svalegange kan variere mellem lejligheder

Vinduesplacering kan være forskellig for de enkelte lejligheder

Boligareal beregnes som bruttoetageareal i henhold til bekendtgørelse nr. 311 af 27. juni 1983