

Type 1








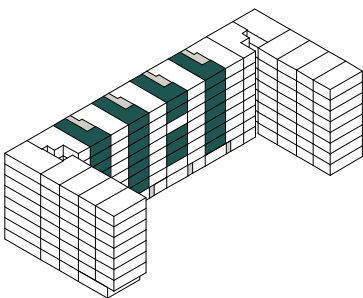
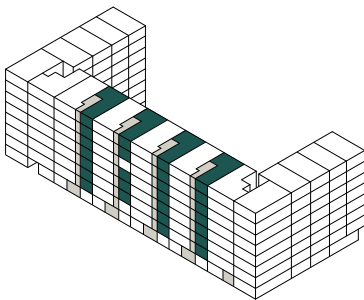
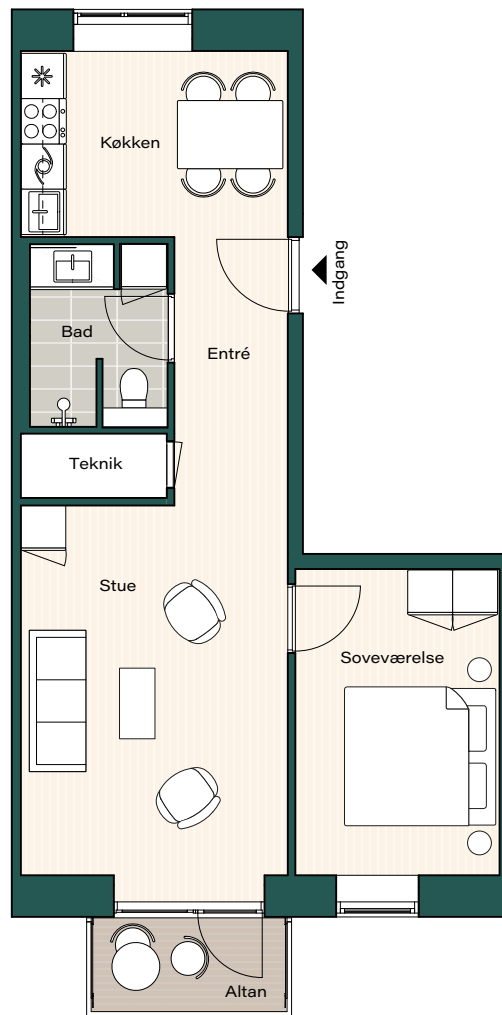
Bolignr.: 51, 53, 55, 57, 59, 61, 63, 69, 71, 73, 77, 79, 83, 85, 87, 89,
91, 93, 95, 99, 101, 103, 105, 107, 109, 111

Værelser: 2

Boligareal: 69 m²

Altan: Ja

-  Køle - / Fryseskab
-  Kogeplade
-  Fast skab
-  Overskab
-  Opvaskemaskine
-  Inddækningskasse



1:100 1 2 3 4 5m

Tegningen er vejledende og ikke endelig målfast
Version: juli 2023.

Bredde på svalegange kan variere mellem lejligheder


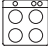


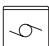

Vinduesplacering kan være forskellig for de enkelte lejligheder

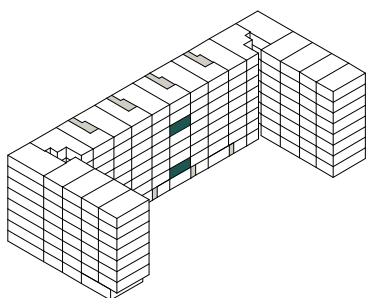
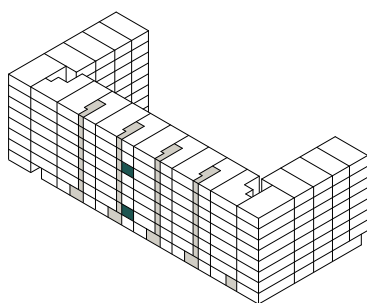
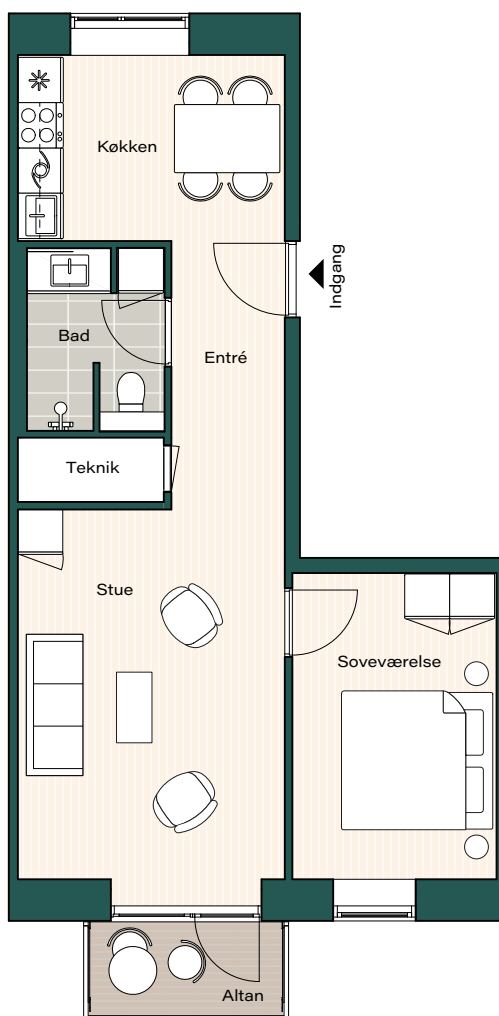
Boligareal beregnes som bruttoetageareal i henhold til bekendtgørelse nr. 311 af 27. juni 1983

Type 1A



Bolignr.: 67,75
Værelser: 2
Boligareal: 70 m²
Altan: Ja

-  Køle - / Fryseskab
-  Kogeplade
-  Fast skab
-  Overskab
-  Opvaskemaskine
-  Inddækningskasse



Tegningen er vejledende og ikke endelig målfast
Version: juli 2023.

Bredde på svalegange kan variere mellem lejligheder


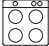




Vinduesplacering kan være forskellig for de enkelte lejligheder

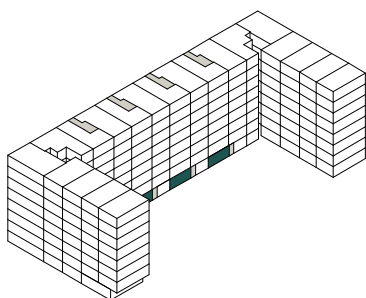
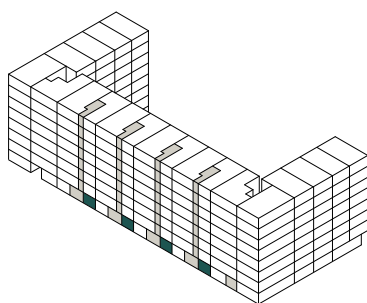
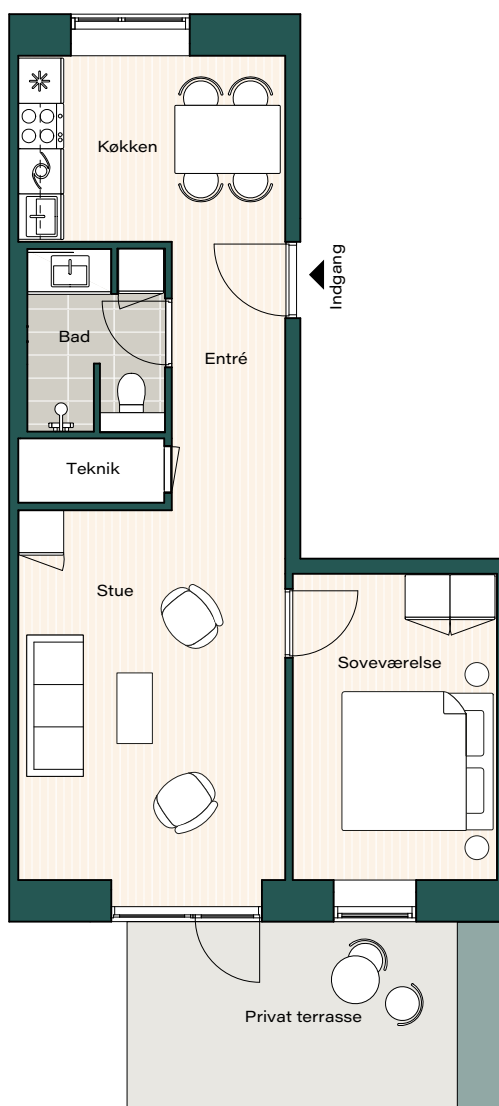
Boligareal beregnes som bruttoetageareal i henhold til bekendtgørelse nr. 311 af 27. juni 1983

Type 1S



Bolignr.: 50, 66, 82, 98
Værelser: 2
Boligareal: 70 m²
Terrasse: Ja

-  Køle - / Fryseskab
-  Kogeplade
-  Fast skab
-  Overskab
-  Opvaskemaskine
-  Inddækningskasse



1:100 1 2 3 4 5m

Tegningen er vejledende og ikke endelig målfast
Version: juli 2023.

Bredde på svalegange kan variere mellem lejligheder


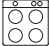


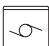

Vinduesplacering kan være forskellig for de enkelte lejligheder

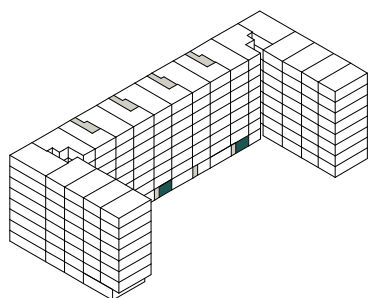
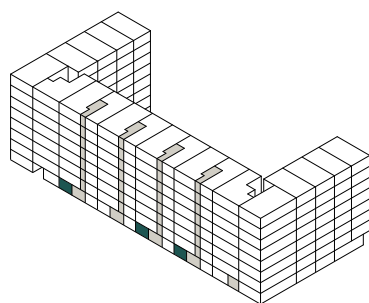
Boligareal beregnes som bruttoetageareal i henhold til bekendtgørelse nr. 311 af 27. juni 1983

Type 2S

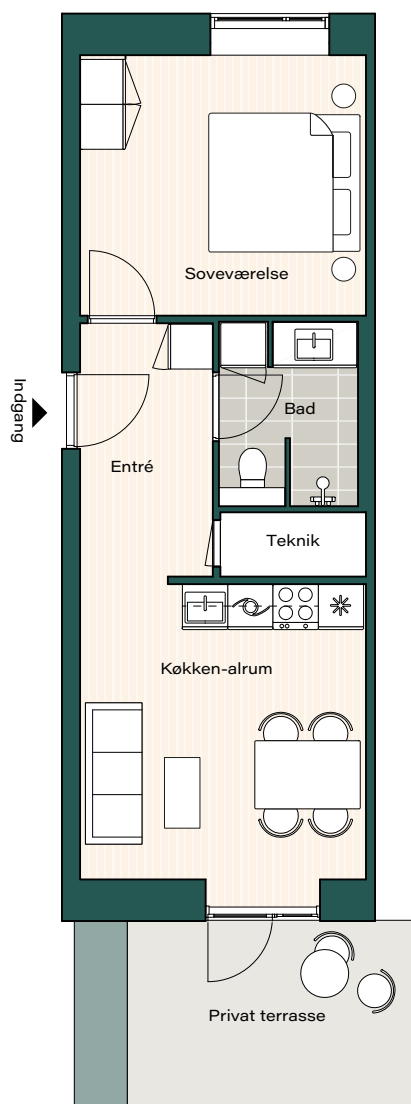


Bolignr.: 49, 81, 97
Værelser: 2
Boligareal: 59 m²
Terrasse: Ja

-  Køle - / Fryseskab
-  Kogeplade
-  Fast skab
-  Overskab
-  Opvaskemaskine
-  Inddækningskasse



Tegningen er vejledende og ikke endelig målfast
Version: juli 2023.



Bredde på svalegange kan variere mellem lejligheder


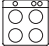


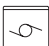

Vinduesplacering kan være forskellig for de enkelte lejligheder

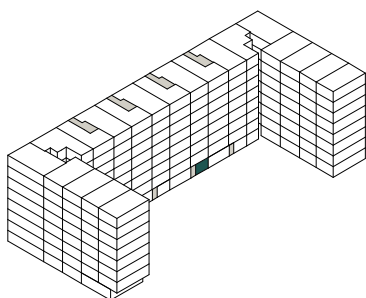
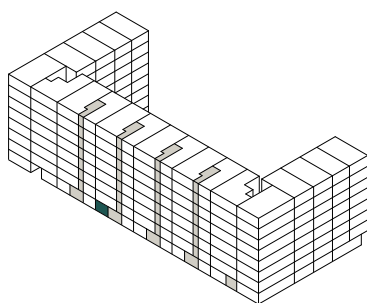
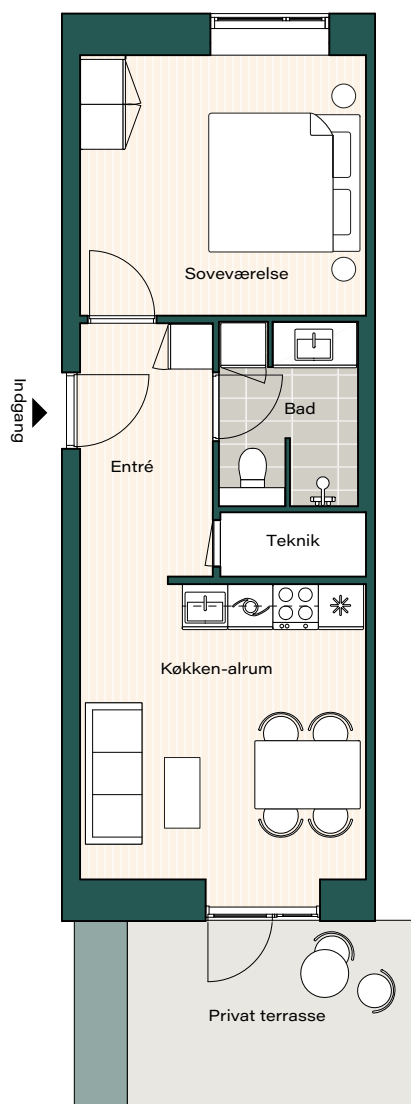
Boligareal beregnes som bruttoetageareal i henhold til bekendtgørelse nr. 311 af 27. juni 1983

Type 2SA



Bolignr.: 65
Værelser: 2
Boligareal: 60 m²
Terrasse: Ja

-  Køle - / Fryseskab
-  Kogeplade
-  Fast skab
-  Overskab
-  Opvaskemaskine
-  Inddækningskasse



1:100 1 2 3 4 5m

Tegningen er vejledende og ikke endelig målfast
Version: juli 2023.

Bredde på svalegange kan variere mellem lejligheder

Vinduesplacering kan være forskellig for de enkelte lejligheder

Boligareal beregnes som bruttoetageareal i henhold til bekendtgørelse nr. 311 af 27. juni 1983

Type 3









Bolignr.: 117, 123, 129, 135

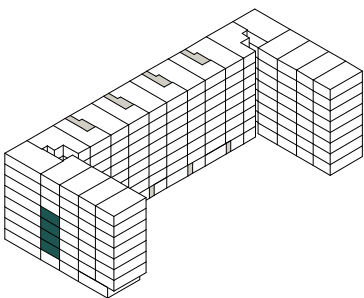
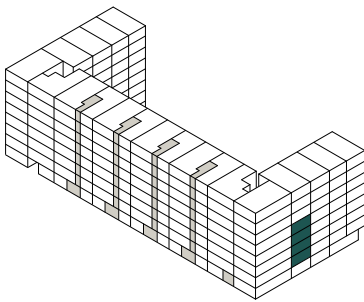
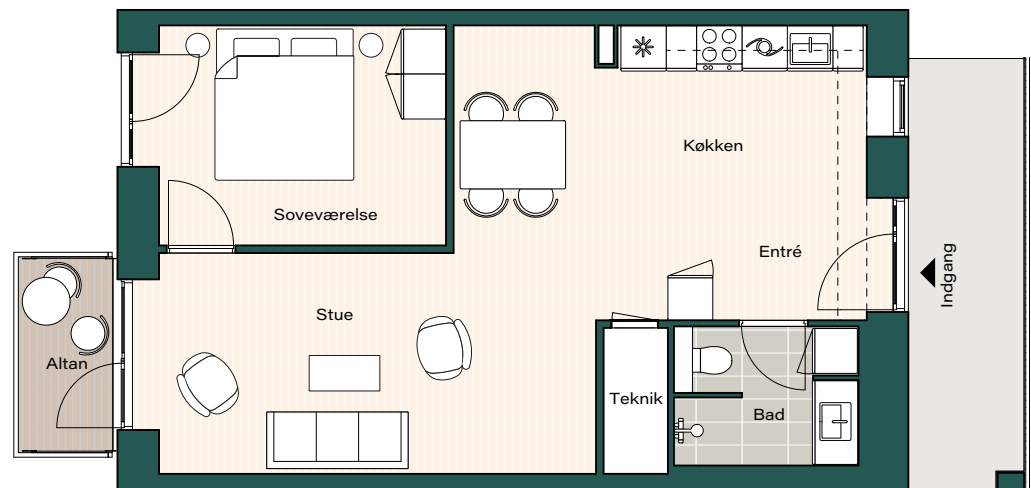
Værelser: 2

Boligareal: 75 m²

Altan: Ja

Altangang: Ja

-  Køle - / Fryseskab
-  Kogeplade
-  Fast skab
-  Overskab
-  Opvaskemaskine
-  Inddækningskasse



Bredde på svalegange kan variere mellem lejligheder

Vinduesplacering kan være forskellig for de enkelte lejligheder


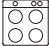


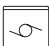

Tegningen er vejledende og ikke endelig målfast
Version: juli 2023.

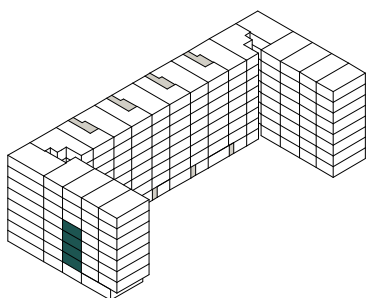
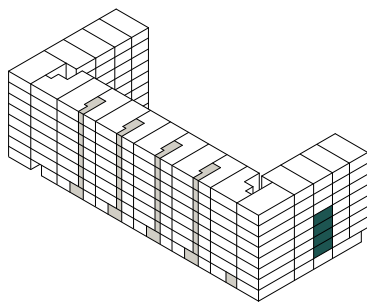
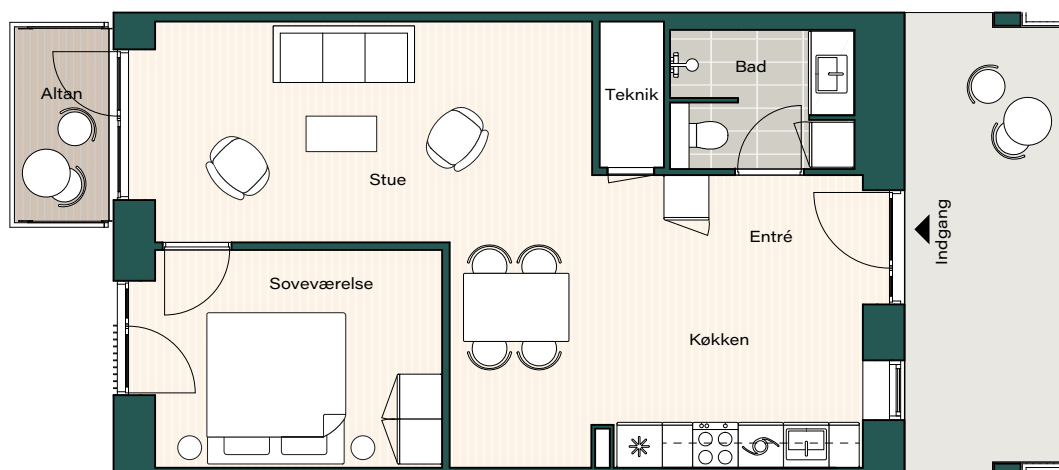
Boligareal beregnes som bruttoetageareal i henhold til bekendtgørelse nr. 311 af 27. juni 1983

Type 3 M1



Bolignr.: 118, 124, 130, 136
Værelser: 2
Boligareal: 74 m²
Altan: Ja
Altangang: Ja

-  Køle - / Fryseskab
-  Kogeplade
-  Fast skab
-  Overskab
-  Opvaskemaskine
-  Inddækningskasse



1:100 1 2 3 4 5m

Bredde på svalegange kan variere mellem lejligheder

Vinduesplacering kan være forskellig for de enkelte lejligheder


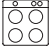


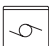

Tegningen er vejledende og ikke endelig målfast
Version: juli 2023.

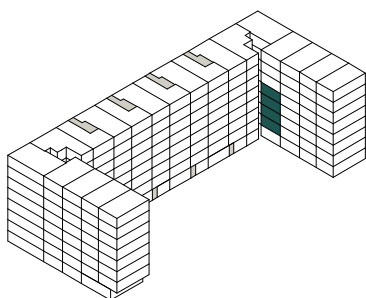
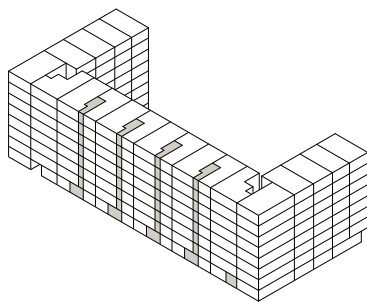
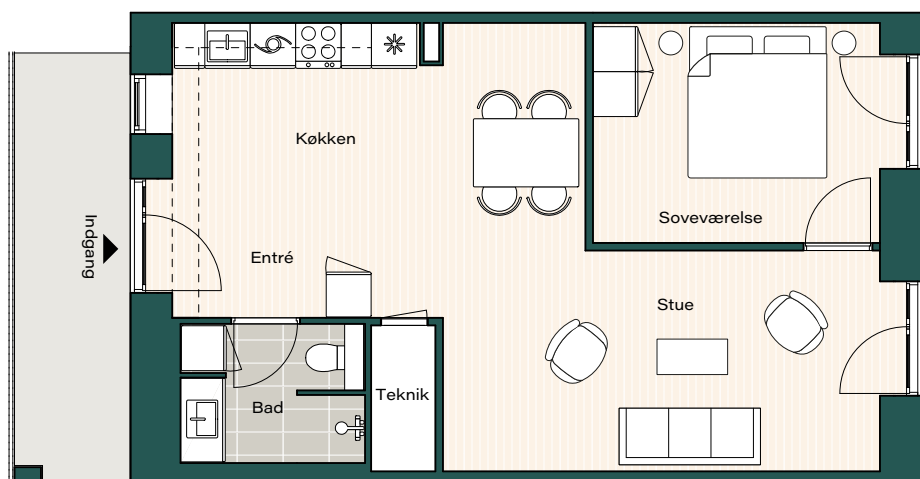
Boligareal beregnes som bruttoetageareal i henhold til bekendtgørelse nr. 311 af 27. juni 1983

Type 3 M2



Bolignr.: 9, 15, 21, 27
Værelser: 2
Boligareal: 75 m²
Altangang: Ja

-  Køle - / Fryseskab
-  Kogeplade
-  Fast skab
-  Overskab
-  Opvaskemaskine
-  Inddækningskasse



Tegningen er vejledende og ikke endelig målfast
Version: juli 2023.

Bredde på svalegange kan variere mellem lejligheder


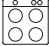




Vinduesplacering kan være forskellig for de enkelte lejligheder

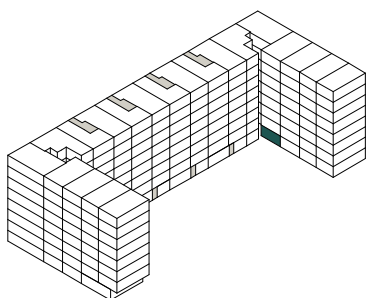
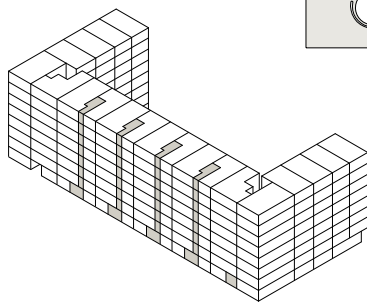
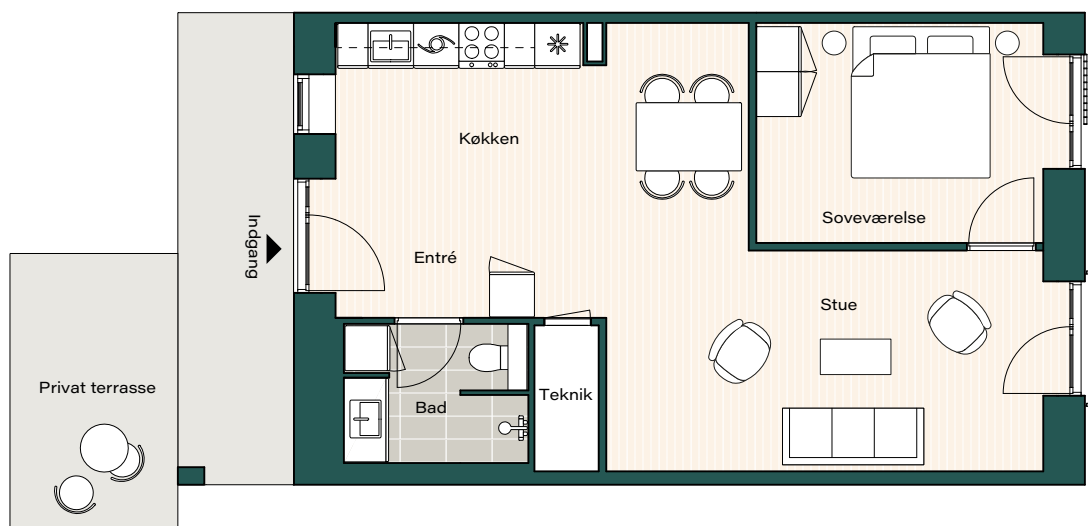
Boligareal beregnes som bruttoetageareal i henhold til bekendtgørelse nr. 311 af 27. juni 1983

Type 3 M2S



Bolignr.: 4
Værelser: 2
Boligareal: 74 m²
Terrasse: Ja

-  Køle - / Fryseskab
-  Kogeplade
-  Fast skab
-  Overskab
-  Opvaskemaskine
-  Inddækningskasse



Tegningen er vejledende og ikke endelig målfast
Version: juli 2023.

Bredde på svalegange kan variere mellem lejligheder


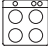


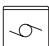

Vinduesplacering kan være forskellig for de enkelte lejligheder

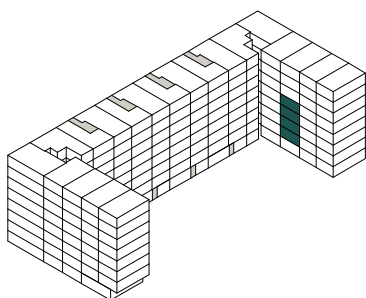
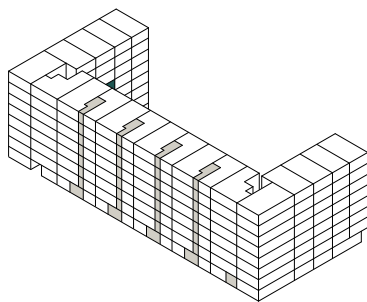
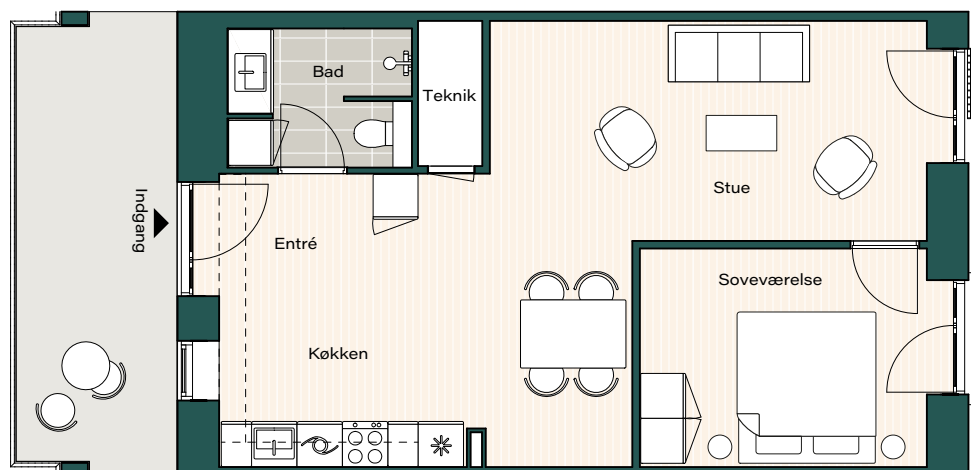
Boligareal beregnes som bruttoetageareal i henhold til bekendtgørelse nr. 311 af 27. juni 1983

Type 3 M3



Bolignr.: 10, 16, 22, 28
Værelser: 2
Boligareal: 74 m²
Altangang: Ja

-  Køle - / Fryseskab
-  Kogeplade
-  Fast skab
-  Overskab
-  Opvaskemaskine
-  Inddækningskasse



Tegningen er vejledende og ikke endelig målfast
Version: juli 2023.

Bredde på svalegange kan variere mellem lejligheder


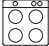




Vinduesplacering kan være forskellig for de enkelte lejligheder

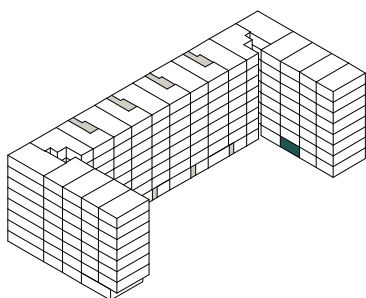
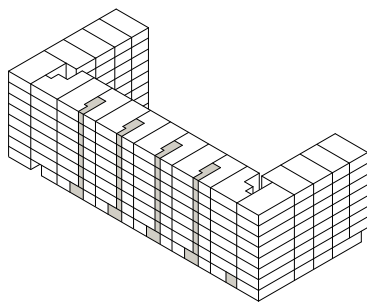
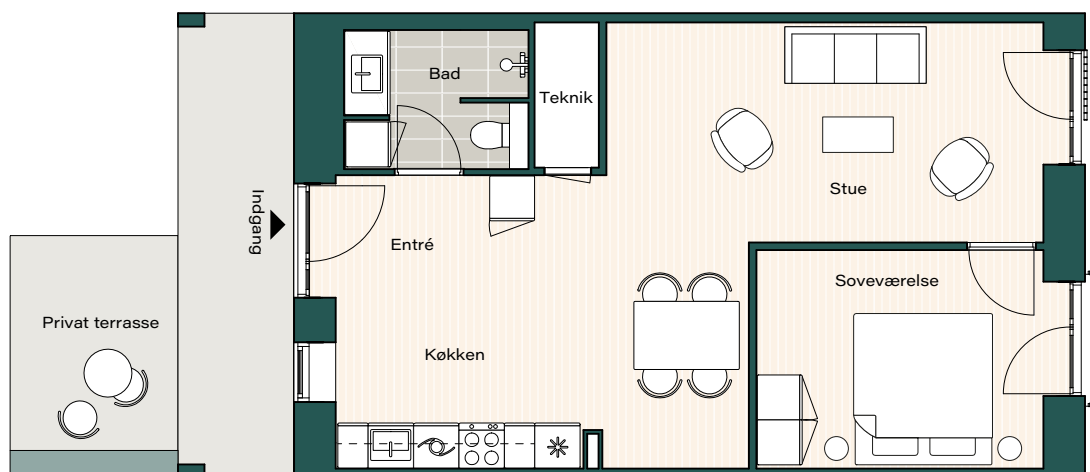
Boligareal beregnes som bruttoetageareal i henhold til bekendtgørelse nr. 311 af 27. juni 1983

Type 3 M3S



Bolignr.: 3
Værelser: 2
Boligareal: 74 m²
Terrasse: Ja

-  Køle - / Fryseskab
-  Kogeplade
-  Fast skab
-  Overskab
-  Opvaskemaskine
-  Inddækningskasse



Tegningen er vejledende og ikke endelig målfast
Version: juli 2023.

Bredde på svalegange kan variere mellem lejligheder


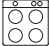


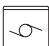

Vinduesplacering kan være forskellig for de enkelte lejligheder

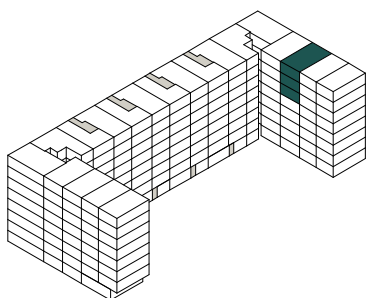
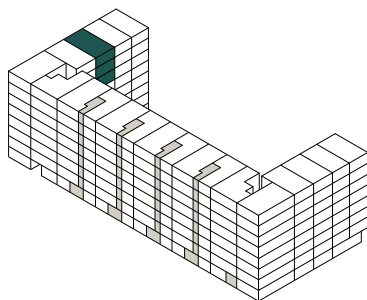
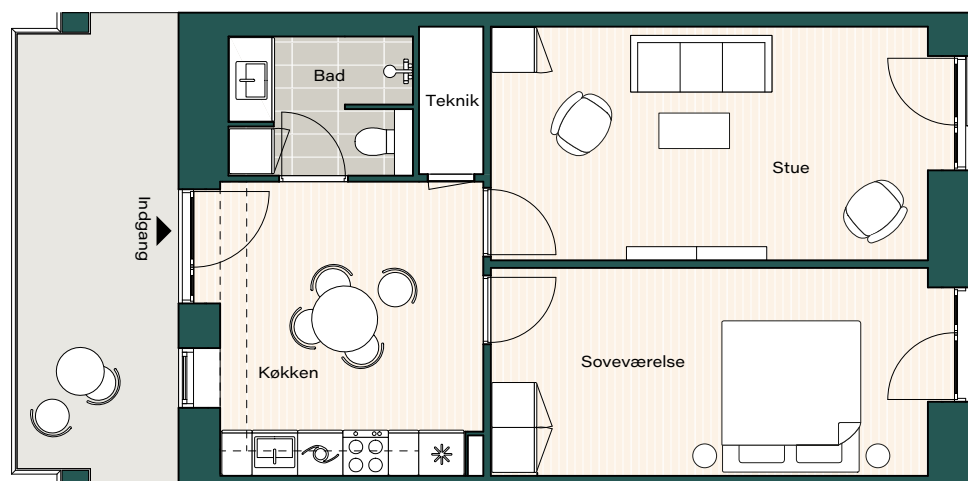
Boligareal beregnes som bruttoetageareal i henhold til bekendtgørelse nr. 311 af 27. juni 1983

Type 4



Bolignr.: 34, 40, 46
Værelser: 2
Boligareal: 74 m²
Altangang: Ja

-  Køle - / Fryseskab
-  Kogeplade
-  Fast skab
-  Overskab
-  Opvaskemaskine
-  Inddækningskasse



1:100 1 2 3 4 5m

Bredde på svalegange kan variere mellem lejligheder

Vinduesplacering kan være forskellig for de enkelte lejligheder


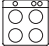


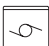

Tegningen er vejledende og ikke endelig målfast
Version: juli 2023.

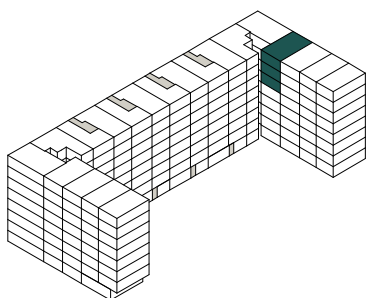
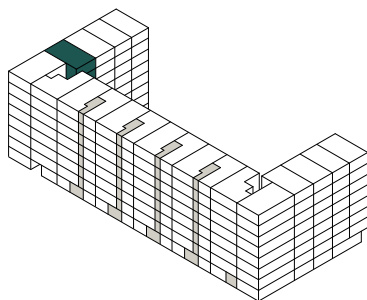
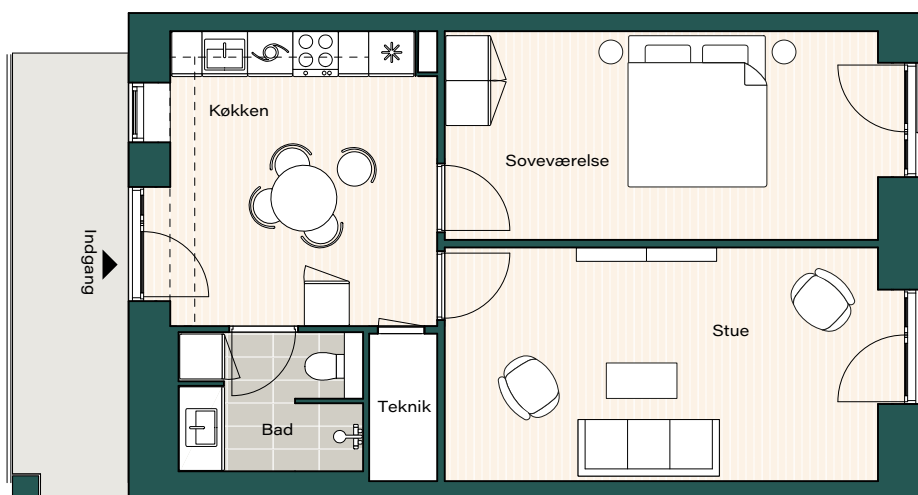
Boligareal beregnes som bruttoetageareal i henhold til bekendtgørelse nr. 311 af 27. juni 1983

Type 4 M



Bolignr.: 33, 39, 45
Værelser: 2
Boligareal: 75 m²
Altangang: Ja

-  Køle - / Fryseskab
-  Kogeplade
-  Fast skab
-  Overskab
-  Opvaskemaskine
-  Inddækningskasse



Bredde på svalegange kan variere mellem lejligheder

Vinduesplacering kan være forskellig for de enkelte lejligheder


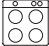


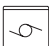

Tegningen er vejledende og ikke endelig målfast
Version: juli 2023.

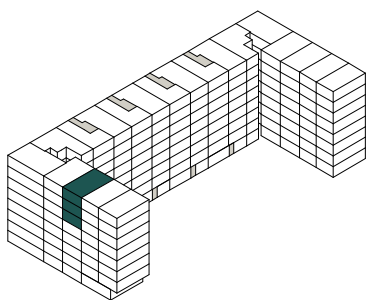
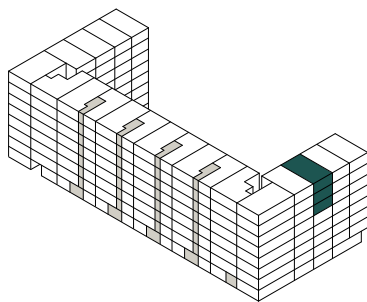
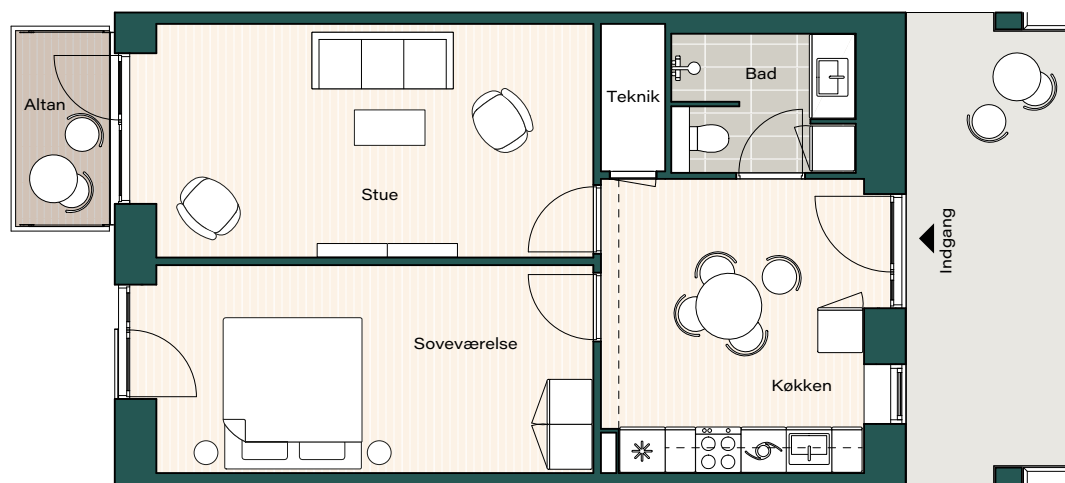
Boligareal beregnes som bruttoetageareal i henhold til bekendtgørelse nr. 311 af 27. juni 1983

Type 4 M1



Bolignr.: 142, 148, 154
Værelser: 2
Boligareal: 74 m²
Altan: Ja
Altangang: Ja

-  Køle - / Fryseskab
-  Kogeplade
-  Fast skab
-  Overskab
-  Opvaskemaskine
-  Inddækningskasse



Bredde på svalegange kan variere mellem lejligheder

Vinduesplacering kan være forskellig for de enkelte lejligheder


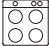


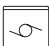

Tegningen er vejledende og ikke endelig målfast
Version: juli 2023.

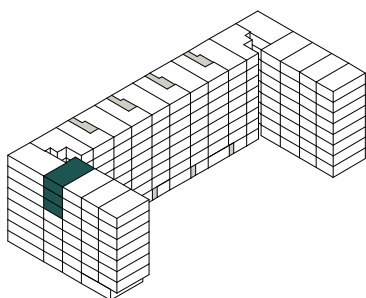
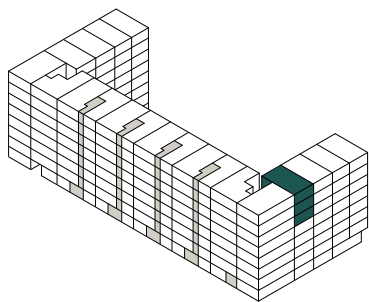
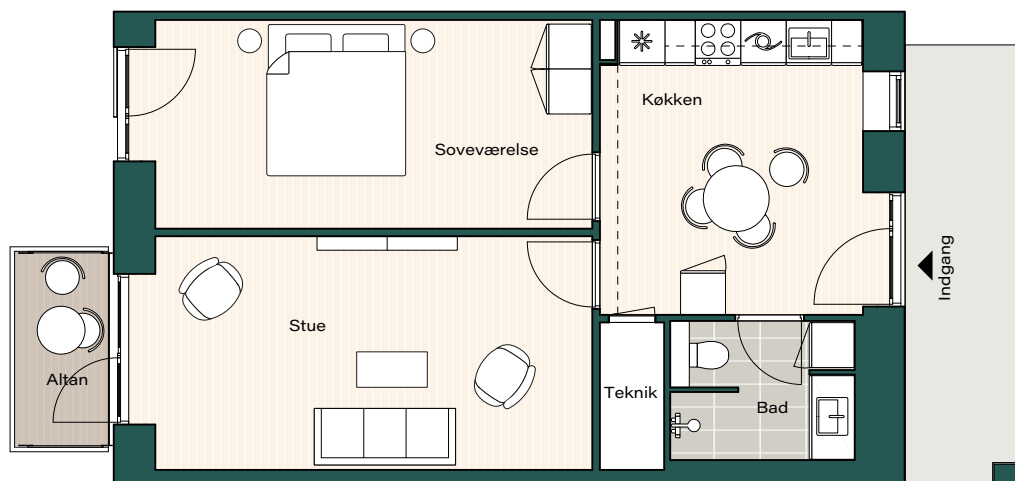
Boligareal beregnes som bruttoetageareal i henhold til bekendtgørelse nr. 311 af 27. juni 1983

Type 4 M2



Bolignr.: 141, 147, 153
Værelser: 2
Boligareal: 75 m²
Altan: Ja
Altangang: Ja

-  Køle - / Fryseskab
-  Kogeplade
-  Fast skab
-  Overskab
-  Opvaskemaskine
-  Inddækningskasse



Bredde på svalegange kan variere mellem lejligheder

Vinduesplacering kan være forskellig for de enkelte lejligheder


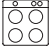


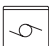

Tegningen er vejledende og ikke endelig målfast
Version: juli 2023.

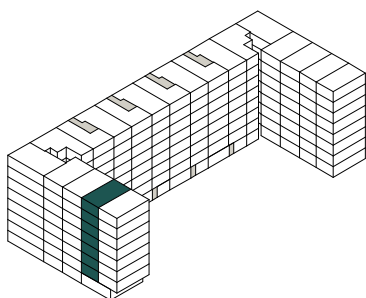
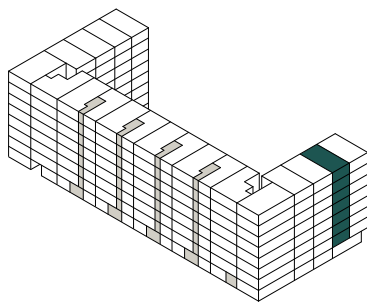
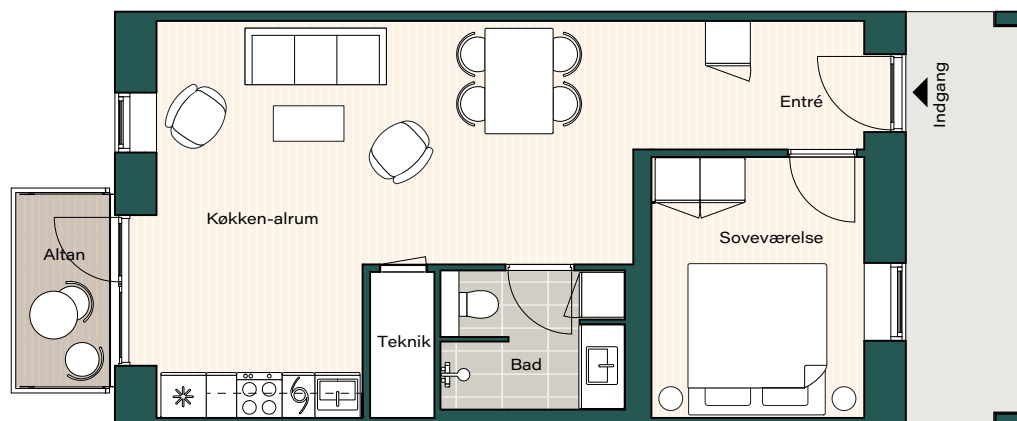
Boligareal beregnes som bruttoetageareal i henhold til bekendtgørelse nr. 311 af 27. juni 1983

Type 5A



Bolignr.: 119, 125, 131, 137, 143, 149, 155
Værelser: 2
Boligareal: 67 m²
Altan: Ja
Altangang: Ja

-  Køle - / Fryseskab
-  Kogeplade
-  Fast skab
-  Overskab
-  Opvaskemaskine
-  Inddækningskasse



Bredde på svalegange kan variere mellem lejligheder

Vinduesplacering kan være forskellig for de enkelte lejligheder


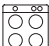




Tegningen er vejledende og ikke endelig målfast
Version: juli 2023.

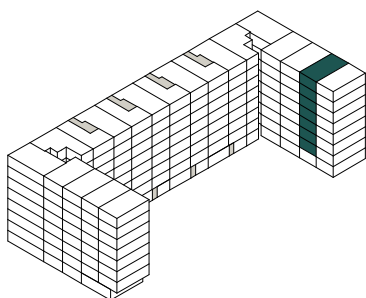
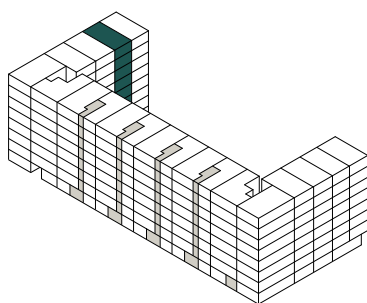
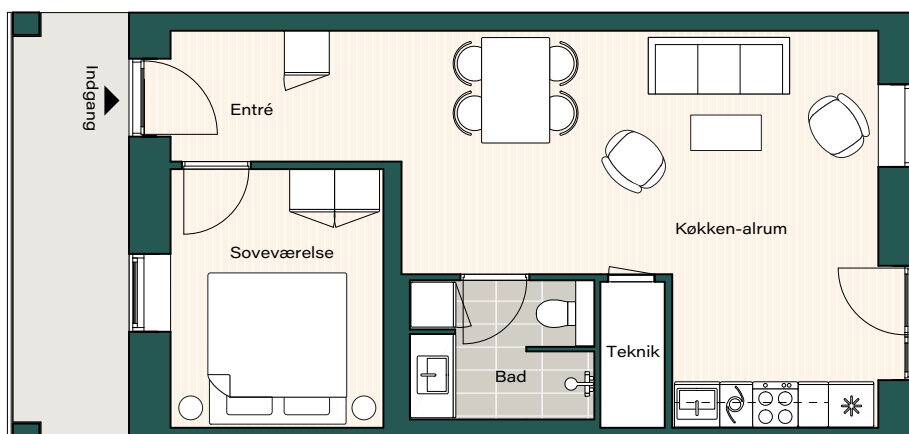
Boligareal beregnes som bruttoetageareal i henhold til bekendtgørelse nr. 311 af 27. juni 1983

Type 5B



Bolignr.: 11, 17, 23, 29, 35, 41, 47
Værelser: 2
Boligareal: 67 m²
Altangang: Ja

-  Køle - / Fryseskab
-  Kogeplade
-  Fast skab
-  Overskab
-  Opvaskemaskine
-  Inddækningskasse



Bredde på svalegange kan variere mellem lejligheder

Vinduesplacering kan være forskellig for de enkelte lejligheder

Tegningen er vejledende og ikke endelig målfast
Version: juli 2023.

Boligareal beregnes som bruttoetageareal i henhold til bekendtgørelse nr. 311 af 27. juni 1983

Type 5B M


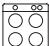


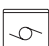



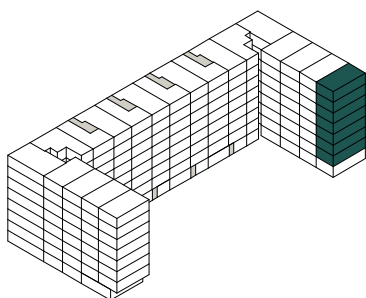
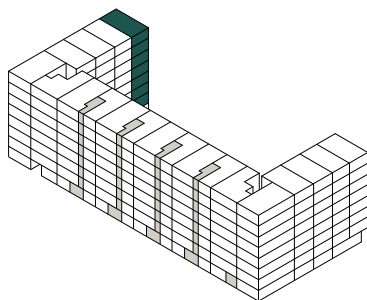
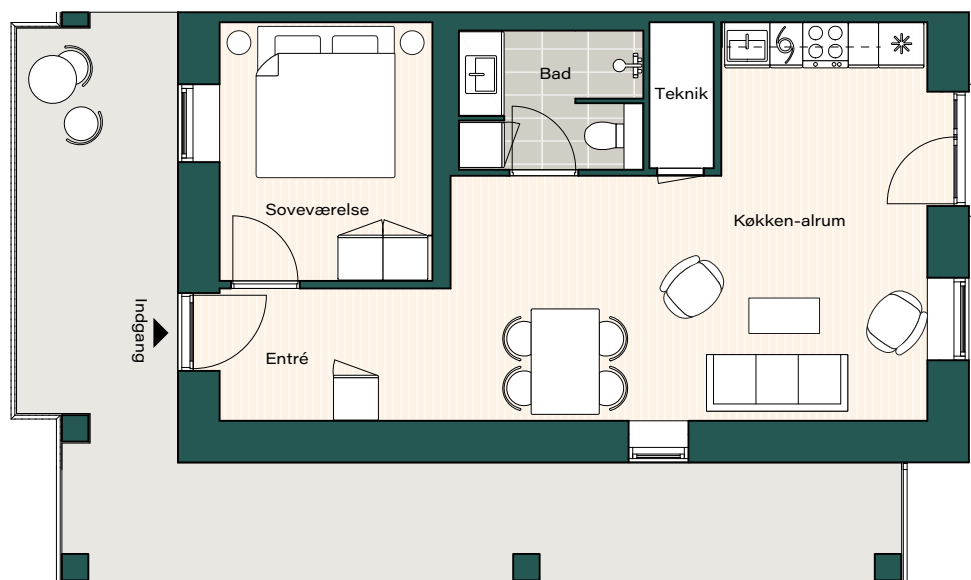
Bolignr.: 12, 18, 24, 30, 36, 42, 48

Værelser: 2

Boligareal: 72 m²

Altangang: Ja

-  Køle - / Fryseskab
-  Kogeplade
-  Fast skab
-  Overskab
-  Opvaskemaskine
-  Inddækningskasse



Bredde på svalegange kan variere mellem lejligheder

Vinduesplacering kan være forskellig for de enkelte lejligheder


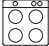




Tegningen er vejledende og ikke endelig målfast
Version: juli 2023.

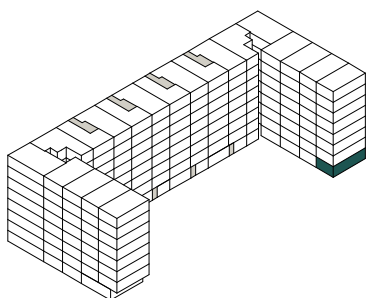
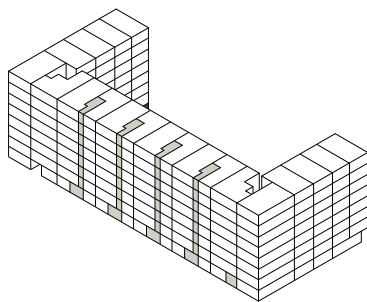
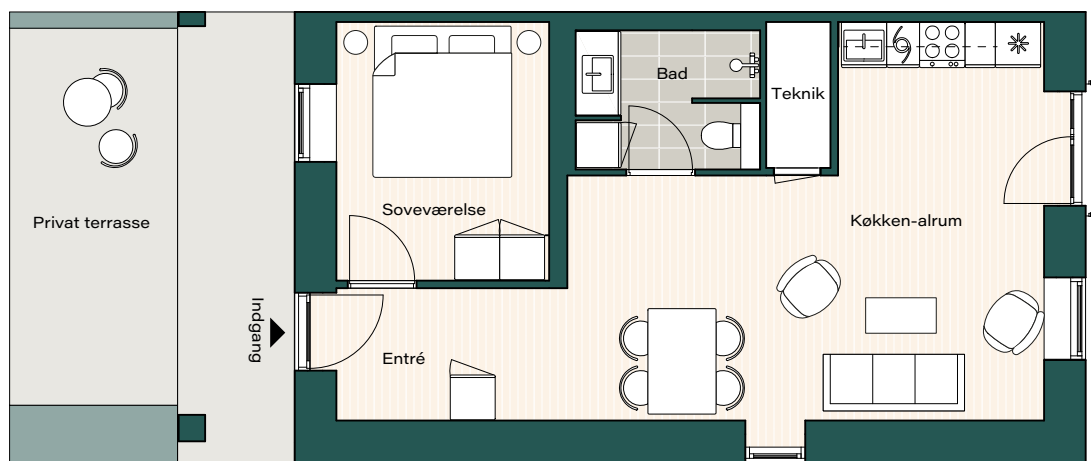
Boligareal beregnes som bruttoetageareal i henhold til bekendtgørelse nr. 311 af 27. juni 1983

Type 5B MS



Bolignr.: 1
Værelser: 2
Boligareal: 72 m²
Terrasse: Ja

-  Køle - / Fryseskab
-  Kogeplade
-  Fast skab
-  Overskab
-  Opvaskemaskine
-  Inddækningskasse



Tegningen er vejledende og ikke endelig målfast
Version: juli 2023.

Bredde på svalegange kan variere mellem lejligheder


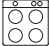


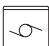

Vinduesplacering kan være forskellig for de enkelte lejligheder

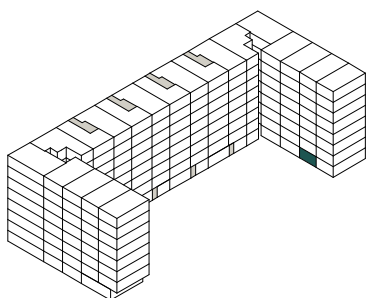
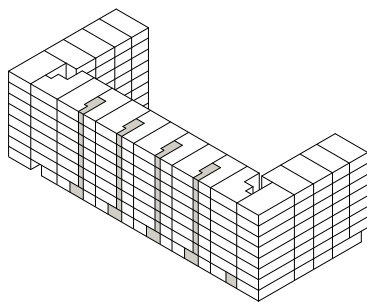
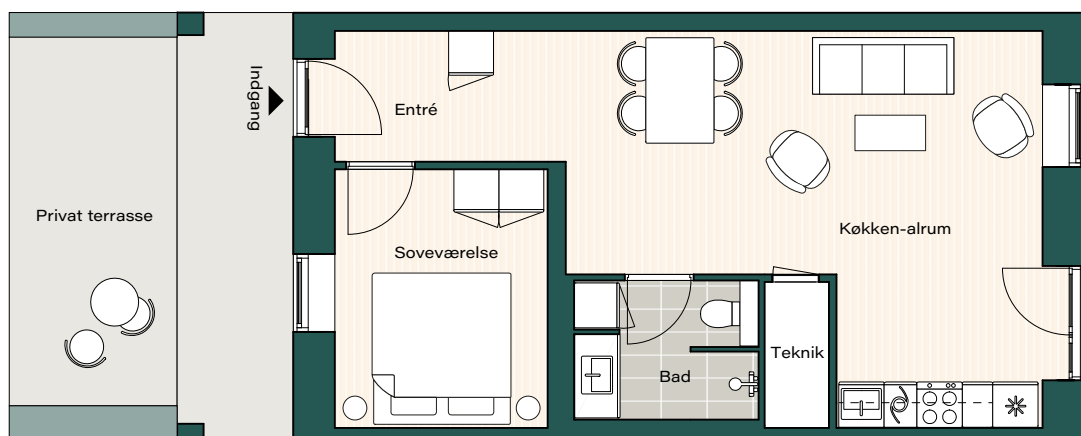
Boligareal beregnes som bruttoetageareal i henhold til bekendtgørelse nr. 311 af 27. juni 1983

Type 5BS



Bolignr.: 2
Værelser: 2
Boligareal: 67 m²
Terrasse: Ja

-  Køle - / Fryseskab
-  Kogeplade
-  Fast skab
-  Overskab
-  Opvaskemaskine
-  Inddækningskasse



Bredde på svalegange kan variere mellem lejligheder

Vinduesplacering kan være forskellig for de enkelte lejligheder


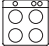


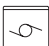

Tegningen er vejledende og ikke endelig målfast
Version: juli 2023.

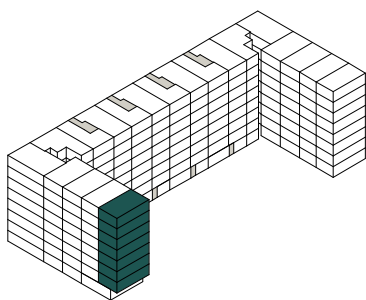
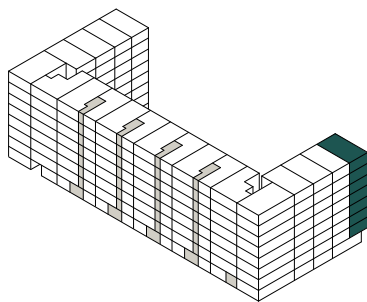
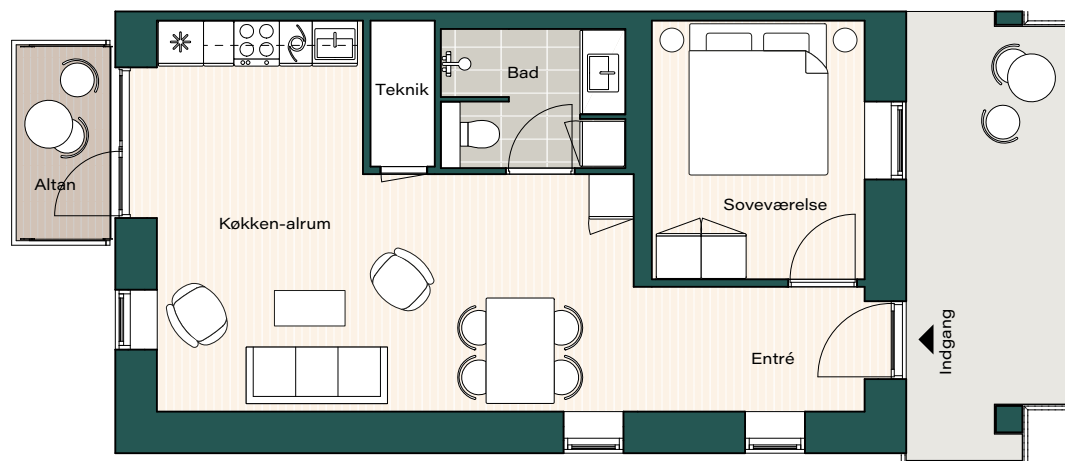
Boligareal beregnes som bruttoetageareal i henhold til bekendtgørelse nr. 311 af 27. juni 1983

Type 5C



Bolignr.: 120, 126, 132, 138, 144, 150, 156
Værelser: 2
Boligareal: 71 m²
Altan: Ja
Altangang: Ja

-  Køle - / Fryseskab
-  Kogeplade
-  Fast skab
-  Overskab
-  Opvaskemaskine
-  Inddækningskasse



Bredde på svalegange kan variere mellem lejligheder

Vinduesplacering kan være forskellig for de enkelte lejligheder





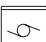

Tegningen er vejledende og ikke endelig målfast
Version: juli 2023.

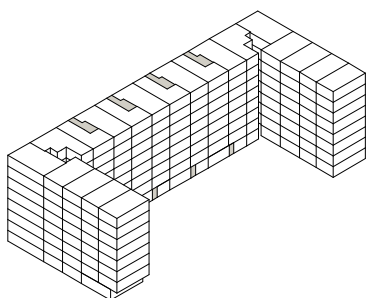
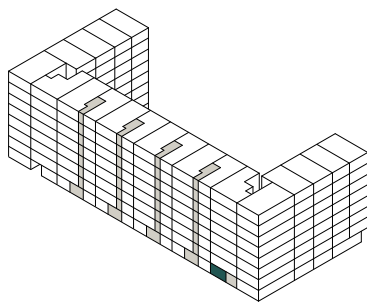
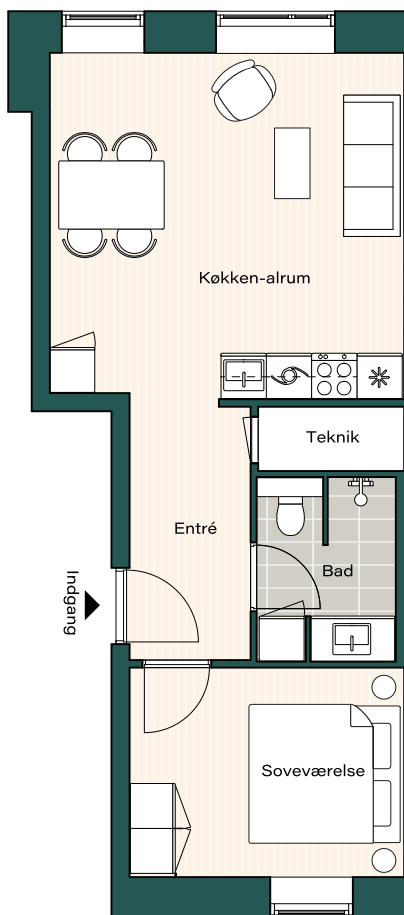
Boligareal beregnes som bruttoetageareal i henhold til bekendtgørelse nr. 311 af 27. juni 1983

Type 8S



Bolignr.: 113
Værelser: 2
Boligareal: 64 m²

-  Køle - / Fryseskab
-  Kogeplade
-  Fast skab
-  Overskab
-  Opvaskemaskine
-  Inddækningskasse



Tegningen er vejledende og ikke endelig målfast
Version: juli 2023.

Bredde på svalegange kan variere mellem lejligheder


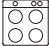


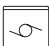

Vinduesplacering kan være forskellig for de enkelte lejligheder

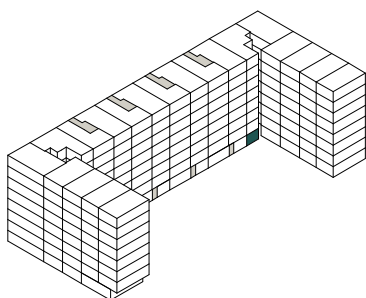
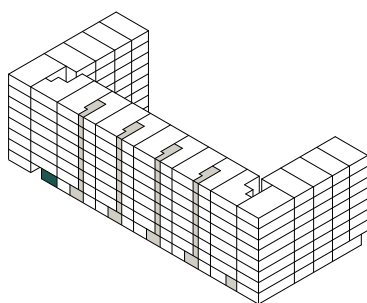
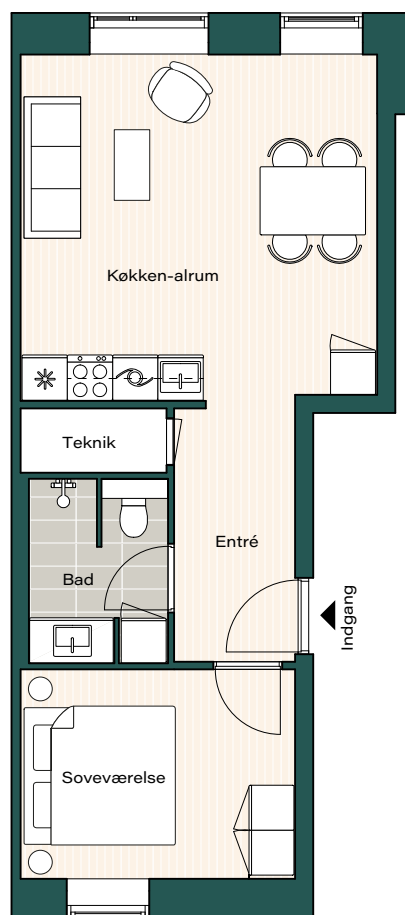
Boligareal beregnes som bruttoetageareal i henhold til bekendtgørelse nr. 311 af 27. juni 1983

Type 8S M



Bolignr.: 6
Værelser: 2
Boligareal: 64 m²

-  Køle - / Fryseskab
-  Kogeplade
-  Fast skab
-  Overskab
-  Opvaskemaskine
-  Inddækningskasse



Bredde på svalegange kan variere mellem lejligheder

Vinduesplacering kan være forskellig for de enkelte lejligheder

Tegningen er vejledende og ikke endelig målfast
Version: juli 2023.

Boligareal beregnes som bruttoetageareal i henhold til bekendtgørelse nr. 311 af 27. juni 1983